

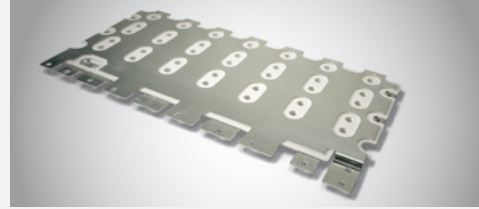
# ROLINX® Laminated & Integrated Busbar Solutions

**ROLINX®**  
MADE FOR POWER

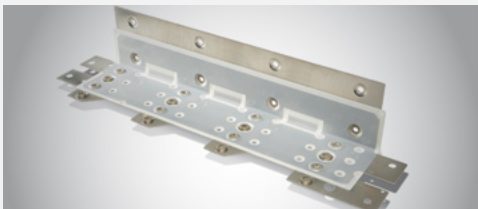
## General Overview



**ROLINX Performance** laminated busbars offer all material, lamination and plating configurations with optimized inductance and design for controlling of partial discharge. Ideal for medium and high voltage applications.



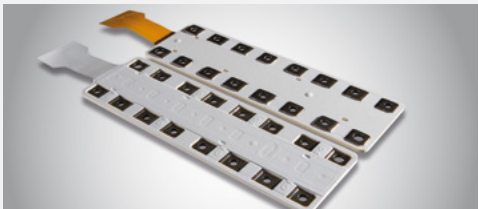
**ROLINX Easy** laminated busbars eliminate the outer insulation. They utilize a closed mold technology which offers high short circuit resistance, optimized inductivity and high currents above 1000A. Ideal for low and medium voltage applications.



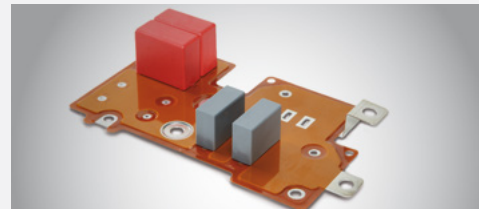
**ROLINX Thermal** busbars are based on the ROLINX performance busbars technology with an increased working temperature up to 130 C.



**ROLINX CapLink** busbars integrate capacitors on laminated busbars to offer a low inductance DC link solution.



**ROLINX Hybrid** busbars are a one piece solution that combines power and signal lines. These busbars are for low voltage applications such as battery cell connections in electric vehicles.



**ROLINX PowerCircuit** busbars are designed to fill the gap between traditional PCBs and standard laminated busbars. They offer high power density in a 3D design.



**ROLINX Flex** flexible busbars with pure copper within a protective PVC insulation offers flexibility for customized solutions.



**ROLINX Compact** epoxy powder coated busbars replace cables in compact designs. They offer a tight fitting solution when limited space is available.

## Connection Techniques

### Busbar to Component Connection

The component connection techniques solve various issues: mechanical stress due to thermal expansion, tolerance compensation flexibility, ease of installation, low contact resistance, etc.

### Capacitors to Busbar

Integration of capacitors using soldering process to achieve the lowest inductance of the total DC link system.



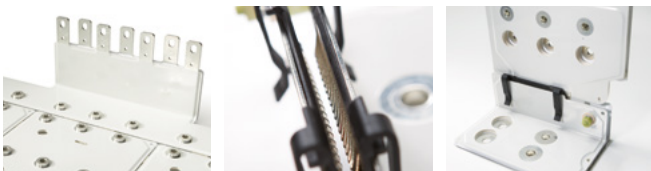
### Busbar to Cable Connection

A laminated busbar equipped with connectors for cabling provides an 'all in one' solution for a flawless connection and easy installation.



### Busbar to Busbar Connection

From a conventional connection solution (bolted) to more advanced techniques that address issues of flexibility, ease of installation and replacement and low contact resistance.



## Typical Characteristics

|                                  |   |
|----------------------------------|---|
| <b>Voltage</b>                   | 12 KV DC  |
| <b>Power</b>                     | up to several MW                                |
| <b>Ambient temperature range</b> | -50°C / Standard +105°C<br>Extended +130°C      |
| <b>Relative humidity</b>         | 55°C / 95% RH                                   |
| <b>Cooling system</b>            | Natural convection                              |
| <b>Conductor material</b>        | Copper, Aluminium                               |
| <b>Insulation material</b>       | PET, PI, FR4, DM1, Epoxy,<br>others on request  |
| <b>Plating</b>                   | Sn, Ni, Ag, Others                              |
| <b>Product life span</b>         | Standard 25 years                               |
| <b>Production test</b>           | Partial discharge,<br>high voltage, dimensional |

## Standards and Certifications

- // ISO 9001, ISO 14001
- // IATF 16949
- // IRIS
- // UL 746C (incl. UL 94) US & CA
- // NF F-16-101, NF F16-102
- // EN 50124-1, EN 50125-1,  
EN 61287-1, EN 61373,  
EN 45545-1

## Typical Applications

- // Traction and auxiliary converters
- // Wind and solar power inverters
- // UPS, VFD
- // Powertrain inverters for electrical vehicles
- // Battery cell and pack interconnections
- // Communication infrastructure

**Rogers offers 'ready to use & install' products by mounting the cables or components in-house. This reduces assembly time and simplifies your supply chain.**

[europe@rogerscorp.com](mailto:europe@rogerscorp.com)  
[www.rolinx.com](http://www.rolinx.com)  
[www.rogerscorp.com/pes](http://www.rogerscorp.com/pes)

**Rogers BVBA**  
Power Electronics Solutions - ROLINX  
Noorwegenstraat 3  
Havennummer 7998A  
9940 Evergem  
Belgium  
Phone +32 9 235 36 - 11  
Fax +32 9 235 36 - 58

**Rogers Technology  
(Souzhou) Co., Ltd.**  
No. 18 West Shenhu Road  
Suzhou Industrial Park  
Suzhou, PRC, 215122  
China  
Phone +86 512 62 58 - 2700  
Phone +86 512 62 58 - 2858  
Fax +86 512 62 58 - 2858

**Rogers Global Headquarters**  
2225 W Chandler Blvd.  
Chandler, AZ 85224  
USA  
Phone +1 480 917 6000  
Phone +1 877 6437701  
Fax +1 480 917 6049