

# Processing Guidelines for RO4400™ Bonding Layers

These guidelines were developed to provide fabricators basic information on processing core and foil bonded multilayered printed wiring boards (PWB's) using RO4450F™, RO4460G2™, and RO4450T™ bonding layers and assorted RO4000® core materials.

## STORAGE:

Upon receipt, all bondply should be immediately moved from the receiving area into a controlled environment. Proper storage conditions would include temperatures between 10°C and 32°C (50°F and 90°F) and protection against exposure to catalytic conditions such as high radiation and ultraviolet light. The bondply should not be stored frozen, refrigerated, or under vacuum. It is best to store the bondply in its heat sealed packaging. Partially used packages should be resealed with tape as the adhesive layers nearest the open end of a package may yellow and harden over time. Material in this condition should be discarded.

When properly stored, bondply properties will be maintained for 6 months from the shipment date. A "first-in, first-out" inventory system is recommended.

## UNPACKING:

The RO4400™ bondply is packaged in a dust-free environment, but will collect dust and debris from counter tops. We recommend counter tops be cleaned prior to unpacking the bondply. Plastic slip-sheeting has been provided to ease separation of individual plies and to shield the bondply from contamination until it is ready for use.

## TOOLING:

Tooling holes can be punched, drilled, or cut. Thin entry and exit materials may be needed to support the bondply through the tooling hole formation process. The slip-sheeting should remain in place through tooling as it will shield the bondply from contamination and should eliminate the risk of individual plies fusing together as the tooling holes are formed.

## DESIGN AND USE CONSIDERATIONS:

The RO4400 bondply materials are recommended for pressing single-lamination or sequentially bonded multilayer constructions using RO4000® cores. The bondply can be used in core and foil bonded multilayer boards. The CU4000™ and CU4000 LoPro® sheeted copper from Rogers Corporation is recommended for use in foil bonded designs using RO4450F™, RO4450T™ and RO4460G2™ bonding layers. CU4000 LoPro copper foils use a thin adhesive layer to promote increased bond of smooth copper to dielectric layers and results in a thickness increase of approximately 0.00035".

Each ply of RO4450F and RO4460G2 bondply will bond to a 0.004" (0.101 mm) thickness and each ply of RO4450T bondply will bond to a nominal 0.0025" (0.064mm), 0.003" (0.076 mm), 0.0035" (0.089mm), 0.004" (0.101 mm), 0.005" (0.127 mm),



or 0.006" (0.152mm) thickness (depending upon the grade selected) when pressed between opposing flat surfaces. The actual thickness each ply will add to a multilayer construction is dependent upon the weight and distribution of copper on the inner-layer surfaces.

The RO4450F/RO4460G2 bondply layers can fill up to 0.0018" of total copper thickness whether the copper is on one side or split between both sides of the adhesive layer. It should be noted that the maximum copper thickness applies to entire inner-layer surfaces including functional areas of the PWB, venting/flow patterns, plating bars, etc. Additional layers of bondply are required when copper fill requirements exceed 0.002". The RO4450T bondply offering has multiple glass styles and resin contents available. This allows for more flexibility in stack up designs.

Venting patterns should be carefully considered when using RO4400 bondply systems. Vertically off set (non-stacking and non-connected) copper dots are preferred for signal layers. The copper dots can be 0.0150" in diameters and spaced on 0.300" to 0.350" centers. A nearly solid starburst pattern is recommended for venting plane layers. Venting channels on opposing sides of plane over plane inner-layers should not overlap. Vertically stacked copper frames around low-pressure areas (such as IPC coupons and x-ray accessible fiducials) should be avoided when possible.

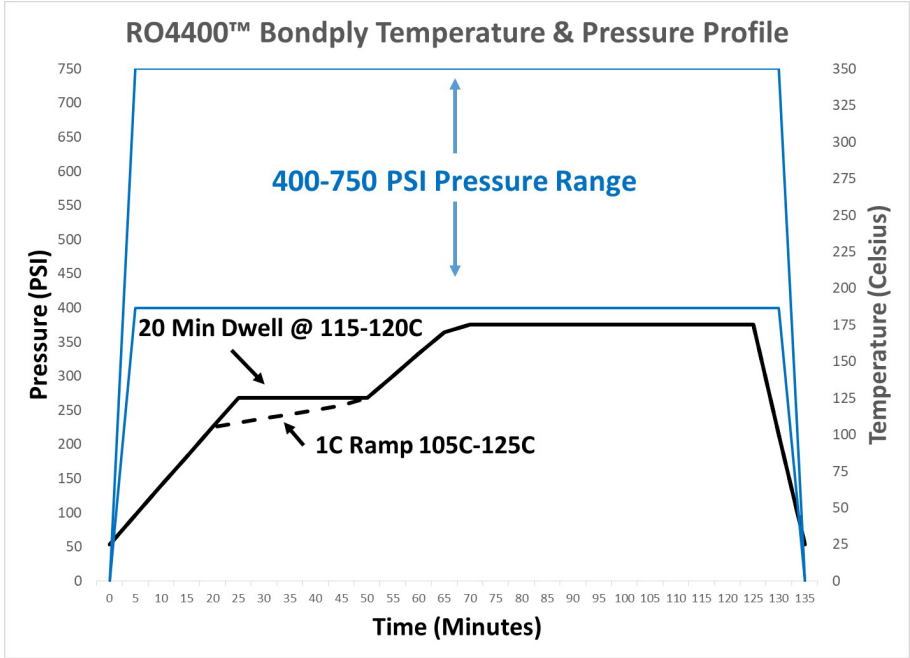
Etched dielectric surfaces should not be mechanically or chemically altered prior to multilayer bonding. Inner-layer metal surfaces should be oxide treated to promote improved mechanical adhesion. Reduced black oxide, brown oxide, and additive or subtractive oxide alternatives have been successfully applied. Inner-layers should be baked for 15-20 minutes at 115°C (239°F) to 125°C (257°F) just prior to preparing the multilayer package for bonding.

Contact your local technical services representative for questions or assistance with these guidelines. Also contact your local technical services representative when bonding designs with (1) more than six metal layers, (2) copper layers 35 microns or thicker, (3) plane layers on opposing sides of bondply, or (4) when bonding to FR-4 cores. In some instances, special instructions may apply. For example, bonding pressures approaching 750 PSI may be required ensure proper fill when using single prepreg plies or filling thick copper inner-layers.

#### **Recommended Bonding Cycle:**

The RO4400 bondply resin systems are at their lowest viscosity at temperatures between 100°C (210°F) and 120°C (250°F). Fill of MLBs will benefit by spending 20 minutes in this reduced viscosity temperature window. This can be accomplished by ramping at a rate of 1°C/Min (2°F/Min) from room temperature 100°C (210°F) to 175°C (350°F), or by dwelling between 115°C (240°F) and 120°C (250°F) for 20 minutes. Should the latter approach be chosen, the ramp rates from RT to 115°C and from 115°C to 175°C can be 1.0°C-4.0°C/Min (2°F to 7°F/Min). Care should be taken to not exceed 120°C (250°F) during the 20 minute dwell. Time vs. temperature trials may be required to define requirements for lagging materials. Thermocouples should be included inside the press book when verifying the thermal profile.

Vacuum assistance is preferred. Bonding pressures between 400 and 750 PSI (depending upon fill requirements) should be applied before book temperature exceeds 38°C (100°F) and should be used for the entire heating cycle regardless of vacuum assistance potential. Lengthy (>5 minutes) vacuum drawdowns should be avoided. Transfer to a cooling press is allowed after a 60 minute dwell at 175°C (350°F).

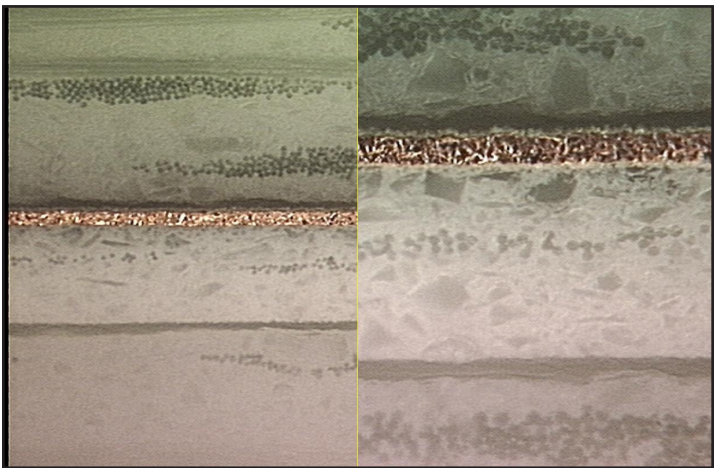
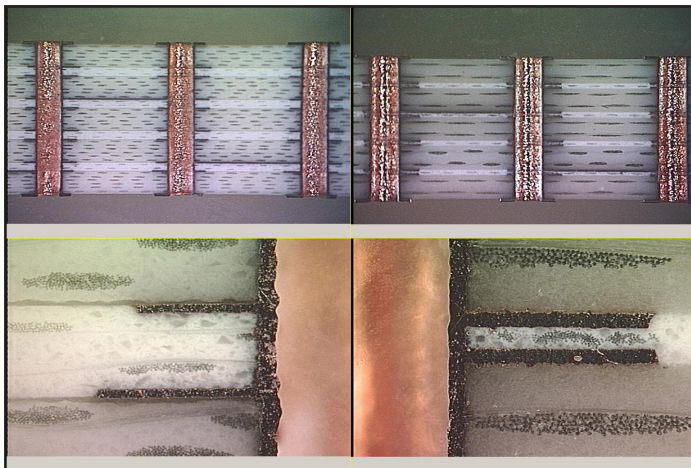


**PTH and Outer-layer Processing:**

Processing guidelines for RO4003C™, RO4350B™, RO4360G2™, RO4835™, RO4835T™ and RO4000 LoPro core materials are applicable to RO4000 multilayer boards. Multilayer constructions may require desmear as determined by inspection of drilled hole walls. If desmear is required, CF4/O2 plasma is preferred over a traditional chemical desmear process. Shortened exposures to solvent swellers and permanganate should be considered when choosing chemical desmear. Etchback of core and prepreg layers is not recommended.

Visual comparison of RO4000 LoPro laminates and traditional RO4000 cores in multilayer constructions.

Expected visual appearance in a cross section of RO4000 LoPro Laminates.



**RO4000 LoPro Cores**

**Traditional RO4000 Cores**

**The information contained in this processing guide is intended to assist you in designing with Rogers' circuit materials and bondply. It is not intended to and does not create any warranties, express or implied, including any warranty of merchantability or fitness for a particular purpose or that the results shown on this data sheet and processing guide will be achieved by a user for a particular purpose. The user is responsible for determining the suitability of Rogers' circuit materials and bondply for each application.**

**Prolonged exposure in an oxidative environment may cause changes to the dielectric properties of hydrocarbon based materials. The rate of change increases at higher temperatures and is highly dependent on the circuit design. Although Rogers' high frequency materials have been used successfully in innumerable applications and reports of oxidation resulting in performance problems are extremely rare, Rogers recommends that the customer evaluate each material and design combination to determine fitness for use over the entire life of the end product.**

These commodities, technology and software are exported from the United States in accordance with the Export Administration regulations. Diversion contrary to U.S. law prohibited.

The Rogers' logo, RO4000, RO4400, RO4003C, RO4350B, RO4360G2, RO4450F, RO4450T, RO4460G2, RO4835, RO4835T, CU4000, LoPro and Helping power, protect, connect our world are trademarks of Rogers Corporation or one of its subsidiaries.

© 2023 Rogers Corporation, Printed in U.S.A, All rights reserved.  
Revised 1628 010323 Publication #92-005